

+



# ARMYJET

AJ-1903iS

Armyjet Manual for new printer installation

## Warning

This manual is only suitable for Armyjet printers. If you install other non-Armyjet printers and face problems, Armyjet will not take responsibility. Armyjet owns the full copyright of this manual.

Armyjet will update its printers each year. So there may have some differences from the real printers.

# 1 Notes about installation

## 1.1 Installation environment

- Be sure that there is enough space
- Good environment: Temperature within 20-30°C, moisture within 40-60%
- Far away from sunshine, strong light and fire
- No dust.

## 1.2 Cautions

- Armyjet Power cable can only be used on Armyjet printers. Original power cable is more stable.
- The printer should be connected to outlet with earth wires.
- Power should meet local requirements.
- Don't use damaged wires
- Earth wire should be installed correctly.

## 1.3 Cautions in operation

- After power on, don't touch head and head cable
- If you need to move printer or replace any parts like head or head cable, please power it off first.
- Clean or do maintenance on the printer, please power off the printer first.
- Never pour off waste ink into natural waters or something like it.
- Once you open the ink bottle, please use it as soon as possible. It's bad for printing quality after you open the ink bottle for a long time and don't use it.
- Don't knock or shake the ink bottle, it will spill out ink.
- Keep the printer clean. Dust or liquid will cause electric leakage.
- Don't use high pressure air rifle to clean the printer.

## 1.4 Personnel Security Guide

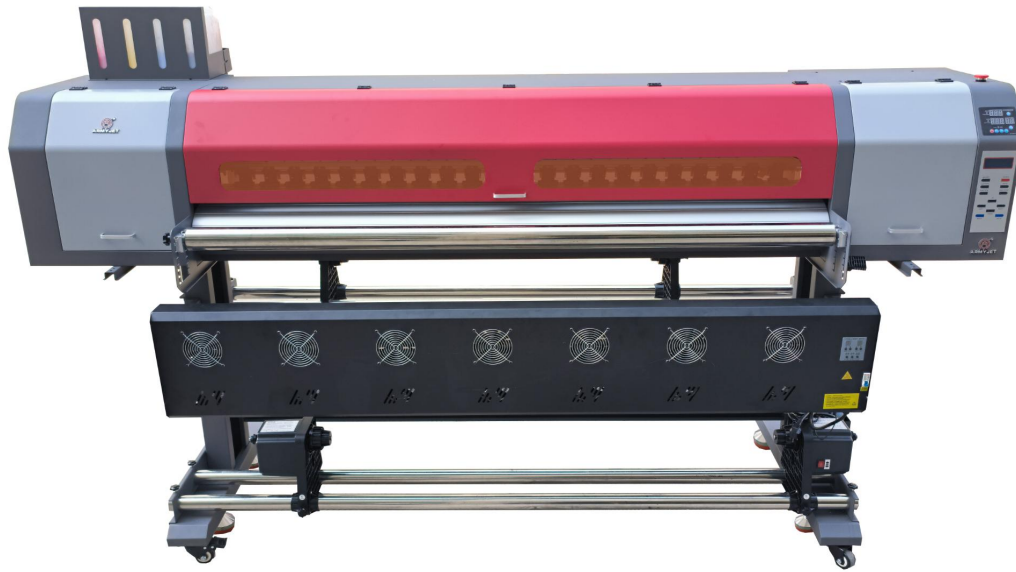
- Keep the ink out the reach of Children.
- Never drink ink. If you happen to swallow some ink, please see the doctor as soon as possible.
- If some ink spills out on your skin, please clean with lots of water and some soap immediately.
- If ink happens to enter your eyes, please clean it with clean water.
- Add or replace ink or something others related to ink, please wear glove, surgical mask, and protective eye shields.

## Part list



Item	Part name	Quantity	Standard
①	Power cable	1	
②	Photoprint DX version	1	
③	USB flash drive	1	
④	Ink dampers	4	
⑤	Pedestal Screw M6X16	14	
	Printhead Screw M3x6	12	
⑥	Head cable	14	
⑦	inductor	1	

## 2、Printer installation



Front

### 2.1 Pedestal Installation

#### 2.1.1 Pedestal parts

**Direction:** Face the printer, guide by your left and right hands.

Front: F      Back: B      Left: L      Right: R



① Foot stool



② Leg



③ Pull Rod



④ Base strutting piece



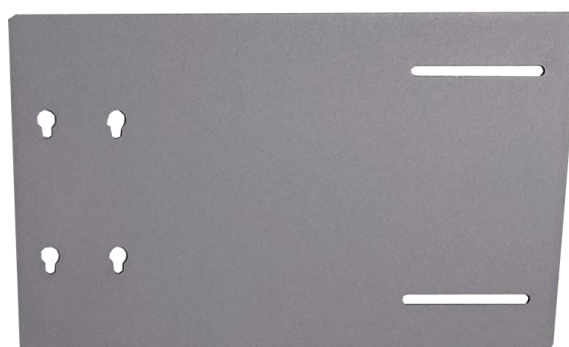
⑤ Waste ink bottle



⑥ mechanical fastener system



⑦ Take up system



⑧ Fixed parts for LED

### 2.1.2 Pedestal Installation



①



②

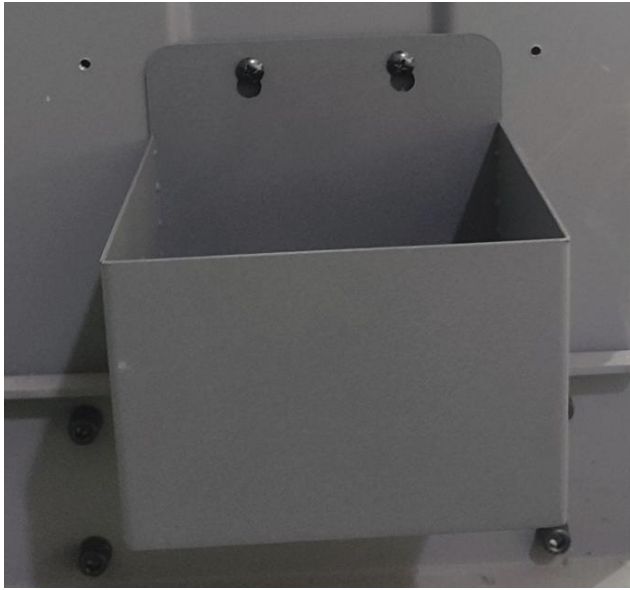


③



④





⑤



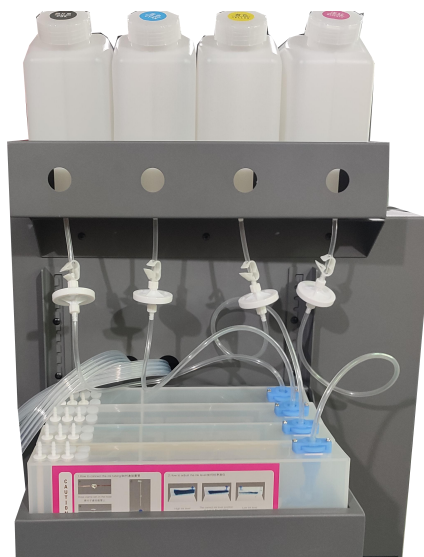
⑥

## 2.2 Connect printer body with Pedestal

2.2.1. Put the printer body on the pedestal, pay attention the four screws we marked, using these screws(M6X16) to fasten the printer



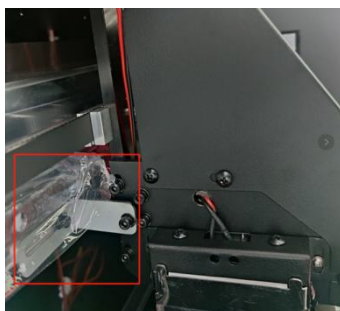
## 2.3 Ink supply system installation



## 3. Printer Adjustment

### 3.1 Before power on your printer

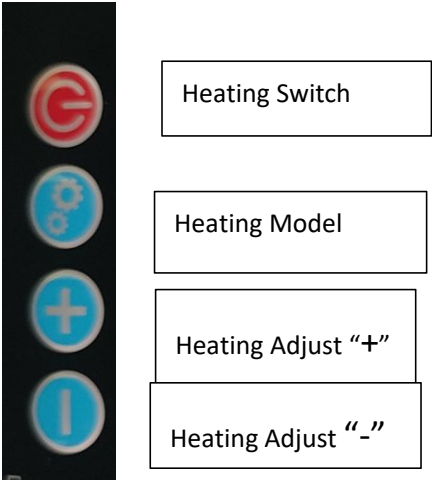
Before you power on the printer, please remove the fixing parts on the carriage and peel off the film on the guide rail.



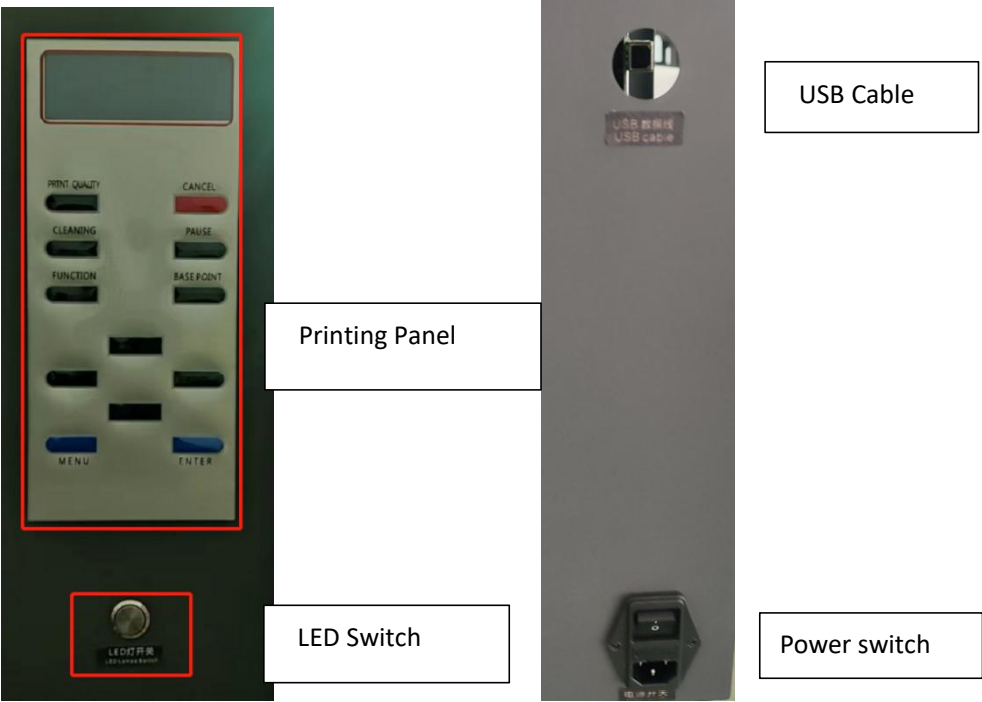
3.2 Functions



①Temperature Control



②Sucking adjust



### 3.3 How to install printhead

#### 3.3.1 Before installing printhead

1. After initialization, screen will show like below. And then test all functions from the panel and then power off the printer.

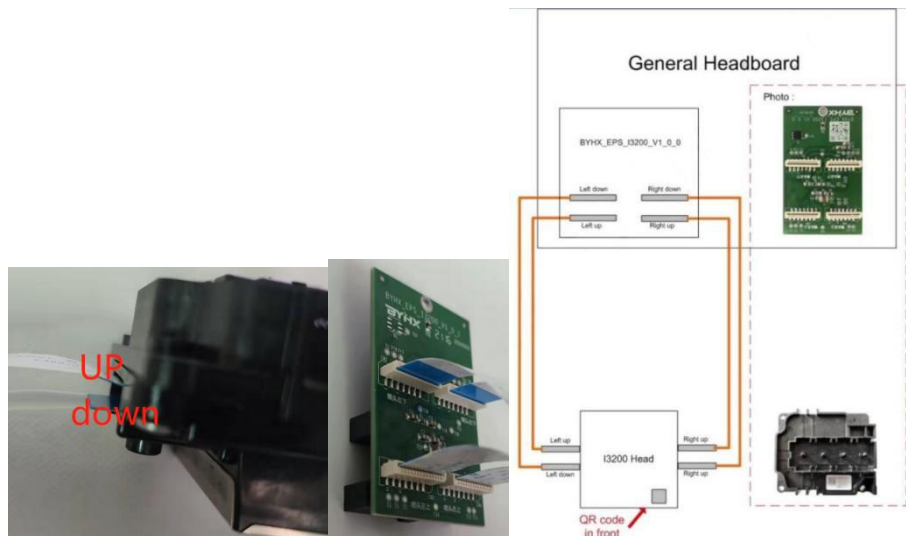


2. Remove the carriage cover and head board cover



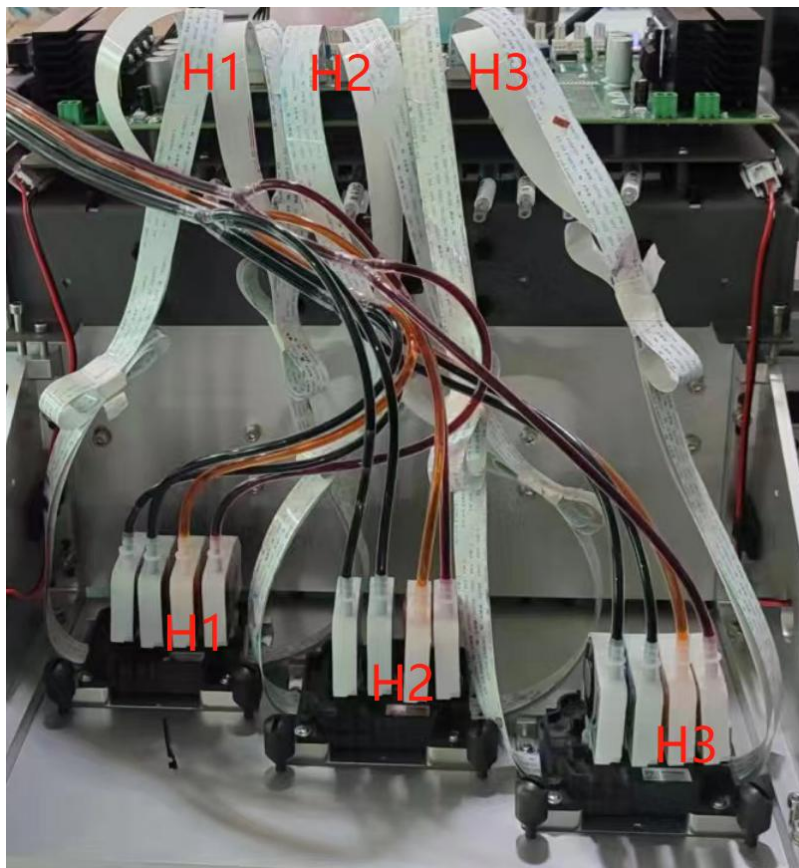
3. Install Printhead

① Connect head cable like the image below.



**Connect head cable carefully, or it will burn your head or head board.**

②.Install head on head plate like below.



③.After power on, loading ink. Load ink from ink pump and press cancel. After cleaning, choose weak cleaning to make sure that all nozzles can print.

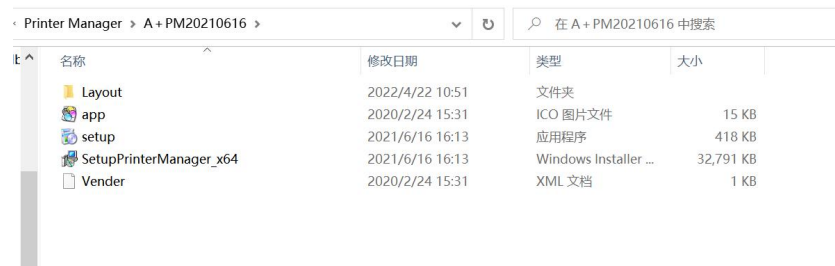
## 4. How to install software and printer manager

### 4.1 PM

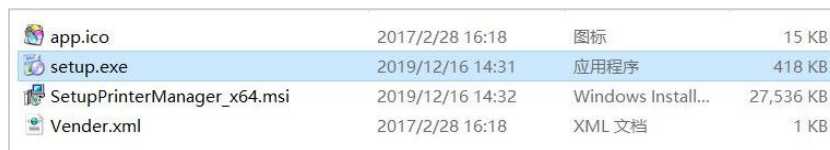
Note: Before you install Printer Manger, you need to **forbid digital signature** if you use Windows 10. Or you can' t install printer manager. About how to forbid digital signature on your Windows 10, please read **Win10 Setting before PM Installation.pdf**.

此电脑 > 本地磁盘 (D:) > 飞派软件 > 出厂资料整理 > 3H BYHX UV CWC 1.8M I3200 >				
名称	修改日期	类型	大小	
Cleaning Parameters	2023/5/5 17:29	文件夹		
ICC Profile_photoprint	2023/5/5 17:26	文件夹		
Layout-3H CWC	2023/5/5 17:45	文件夹		
Printer Manager	2023/5/5 17:47	文件夹		
Updater_headboard 3H	2023/5/5 17:27	文件夹		
Updater_mainboard 3H_V10.0	2023/5/5 17:24	文件夹		
Waveform	2023/5/5 17:28	文件夹		
dotNetFx40_Full_x86_x64.exe	2019/2/27 14:40	应用程序	49,268 KB	
PhotoPrint Installation manual.pdf	2022/4/7 15:11	WPS PDF 文档	8,017 KB	
Win10 Setting before PM Installation.pdf.pdf	2022/4/7 14:46	WPS PDF 文档	1,392 KB	

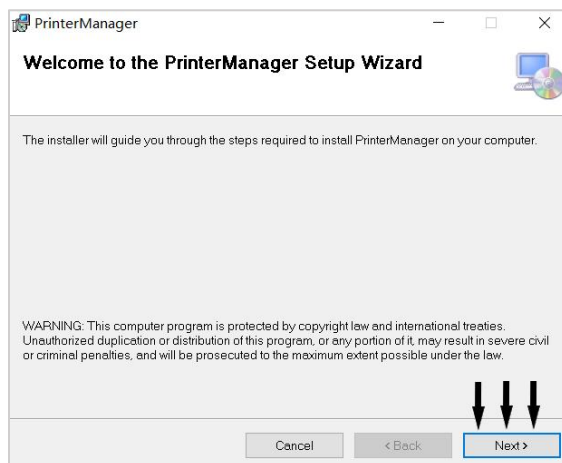
(1) Open **A+PM20210616** file where printer manager locates.



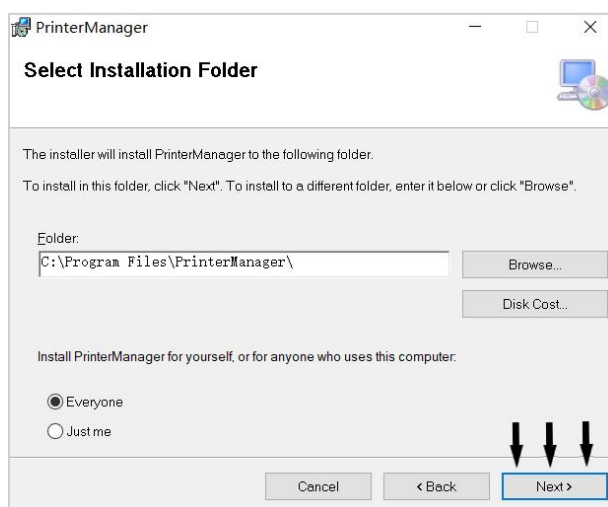
(2) Click **setup.exe** to install Printer Manager.



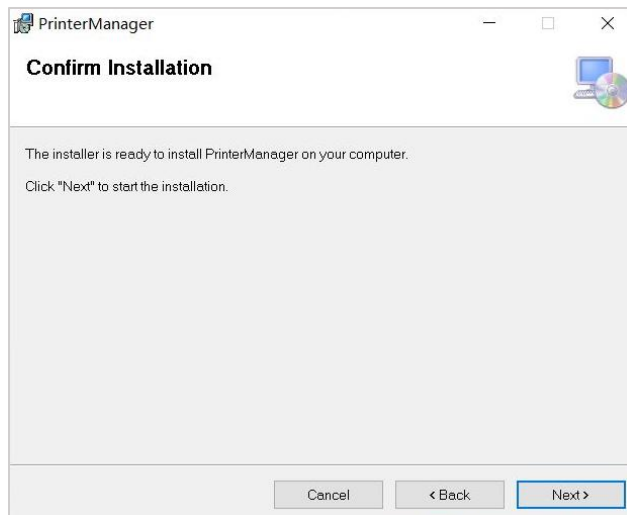
(3) When you see the following image, then click **Next**.



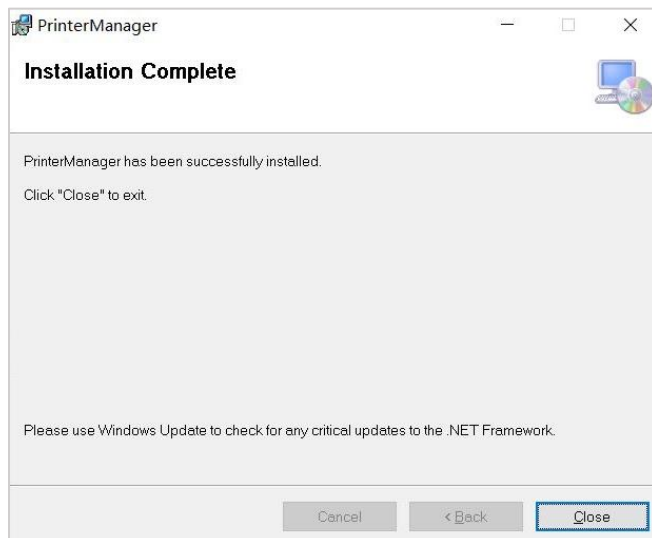
(4) When you see the following, click **Browse** to choose where you want to install printer manager. And then click **Next**.



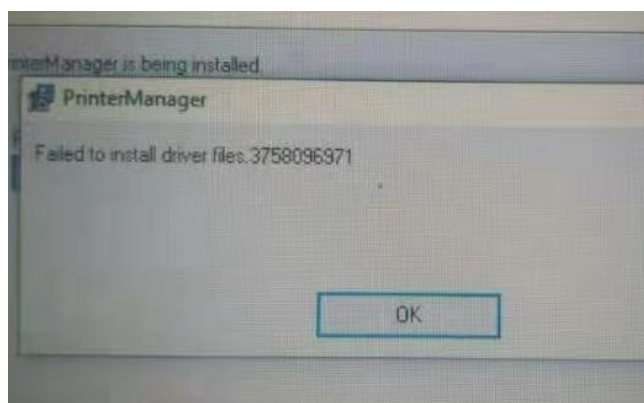
(5) When you see the following, click **Next** to continue.



(6) After installation complete, click **Close**.



During the installation, if you see the following, it means that you need to install computer environment ***dotNetFx40\_Full\_x86\_x64***.





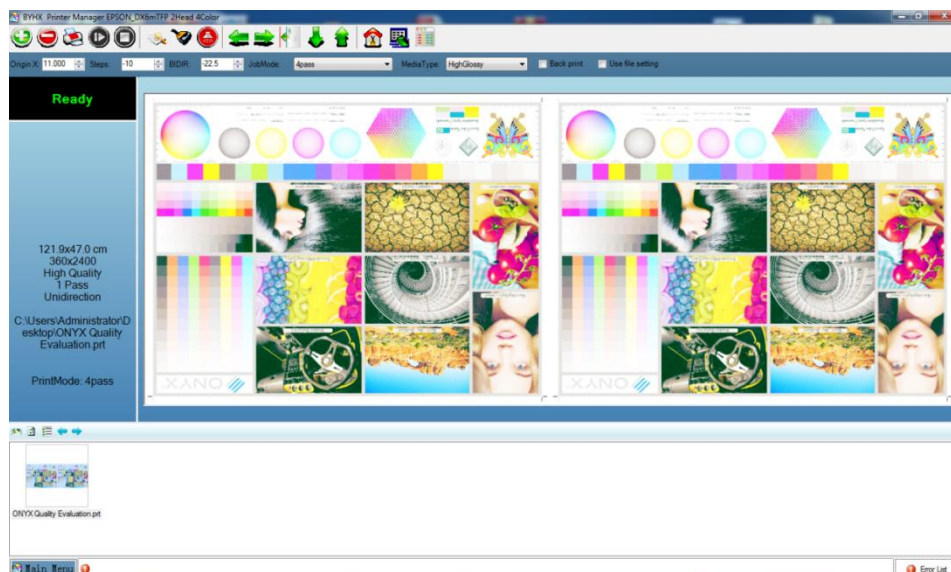
D:\飞派软件\出厂资料整理\3H BYHX UV CWC 1.8M I3200			
名称	修改日期	类型	大小
Cleaning Parameters	2023/5/5 17:29	文件夹	
ICC Profile_photoprint	2023/5/5 17:26	文件夹	
Layout-3H CWC	2023/5/5 17:45	文件夹	
Printer Manager	2023/5/5 17:47	文件夹	
Updater_headboard 3H	2023/5/5 17:27	文件夹	
Updater_mainboard 3H_V10.0	2023/5/5 17:24	文件夹	
Waveform	2023/5/5 17:28	文件夹	
dotNetFx40 Full x86 x64.exe	2019/2/27 14:40	应用程序	49,268 KB
PhotoPrint Installation manual.pdf	2022/4/7 15:11	WPS PDF 文档	8,017 KB
Win10 Setting before PM Installation.pdf.pdf	2022/4/7 14:46	WPS PDF 文档	1,392 KB

## 4.2 How to Use Printer Manager

### 1. Click the following icon

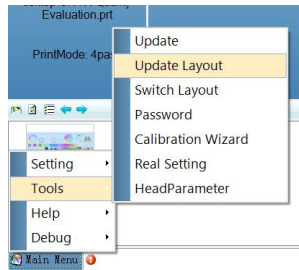


### 2. After you enter main menu, then we need to set the printer.





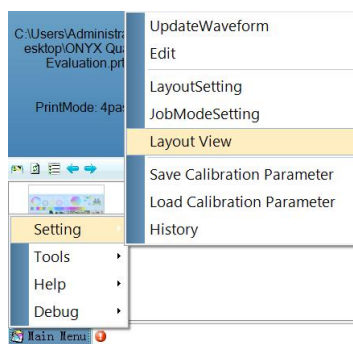
① Update head layout like the below. If your printer is single head, then choose Layout-3H .

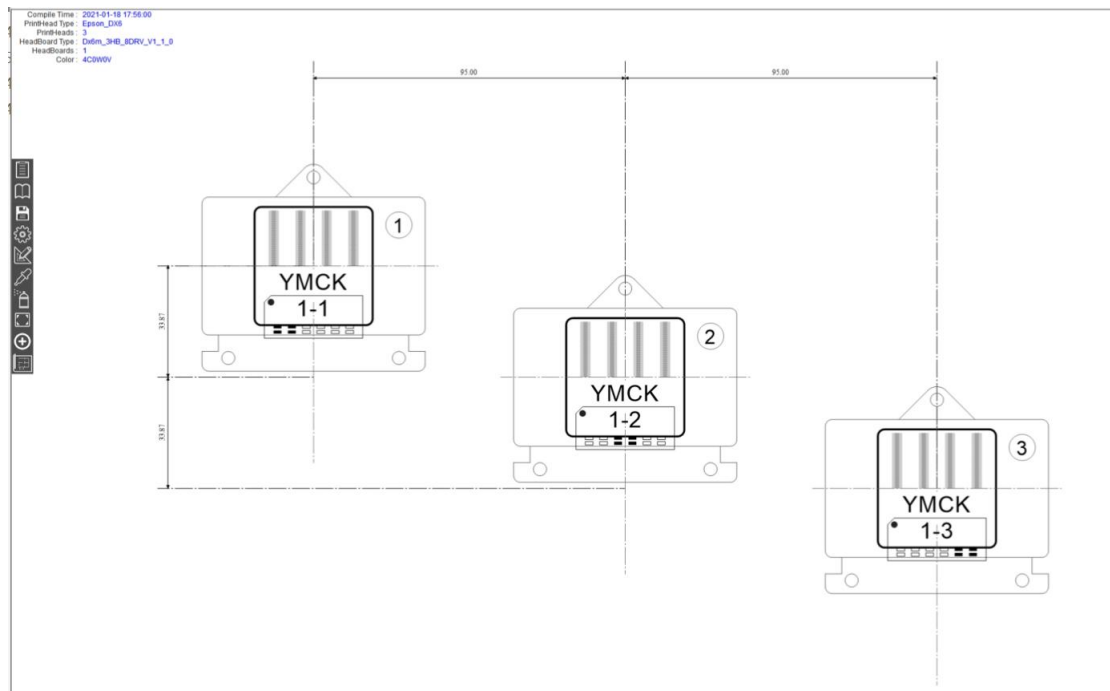


电脑 > 本地磁盘 (D:) > 飞派软件 > 出厂资料整理 > 3H BYHX SUB 1.8M I3200 >

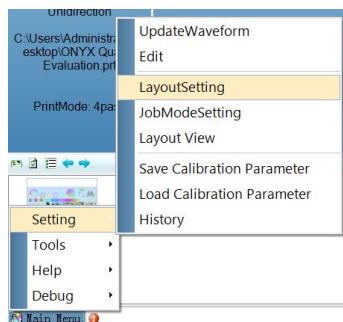
名称	修改日期	类型	大小
Cleaning Parameters	2023/4/6 14:03	文件夹	
ICC Profile_photoprint	2022/11/29 10:31	文件夹	
Layout-3H	2023/4/6 14:03	文件夹	
Printer Manager	2023/4/6 14:03	文件夹	
Updator_headboard 3H	2023/4/6 14:04	文件夹	
Updator_mainboard 3H_V10.0	2022/11/29 10:31	文件夹	
Waveform	2023/4/6 14:05	文件夹	
dotNetFx40_Full_x86_x64.exe	2023/5/5 11:14	应用程序	49,268 KB
PhotoPrint Installation manual.pdf	2022/4/7 15:11	WPS PDF 文档	8,017 KB
Win10 Setting before PM Installation.pdf.pdf	2022/4/7 14:46	WPS PDF 文档	1,392 KB

② After you update layout, please click layout view to check if you update the right one.

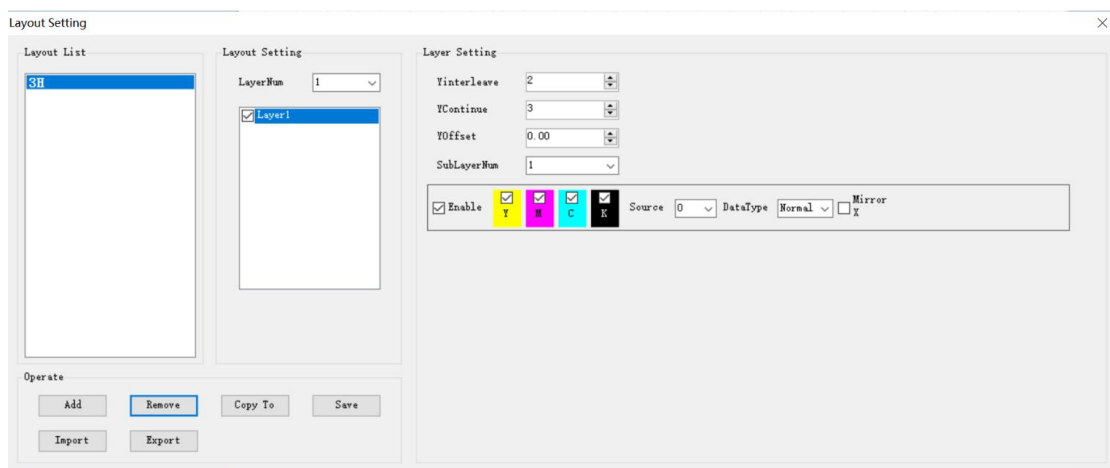




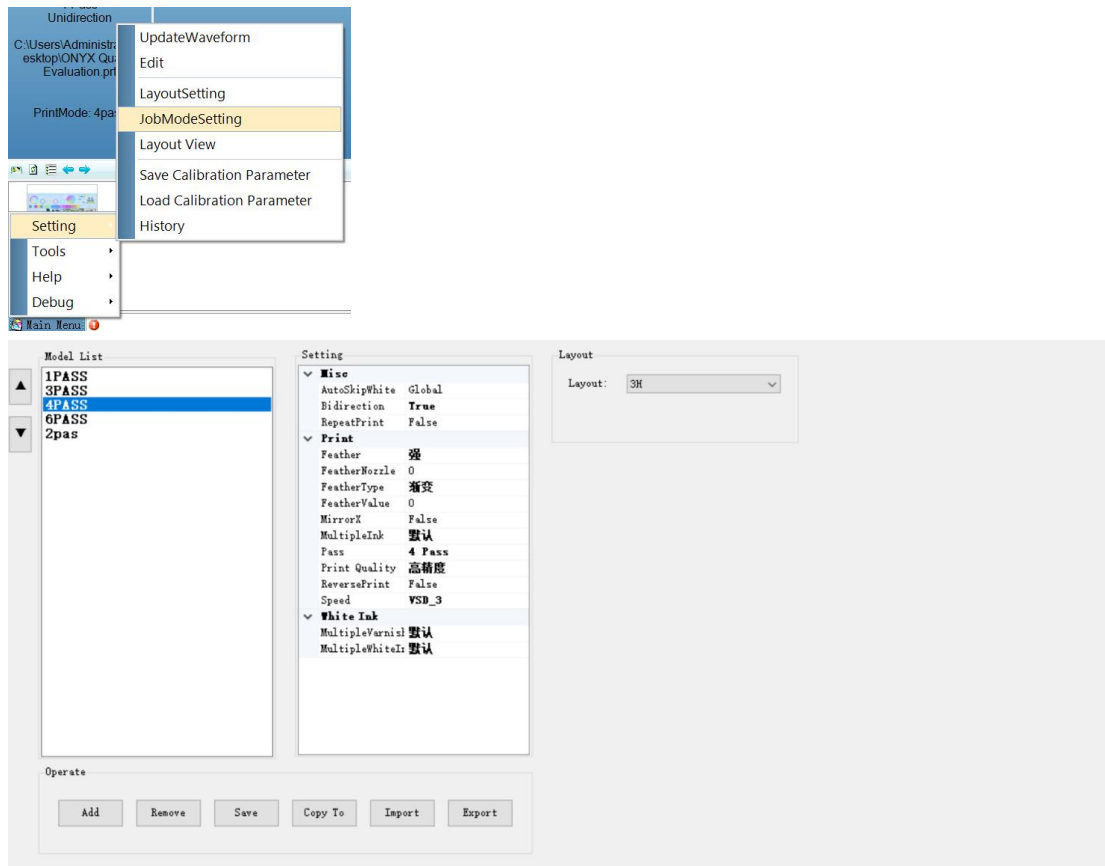
### ③ Layout setting



### Layer1

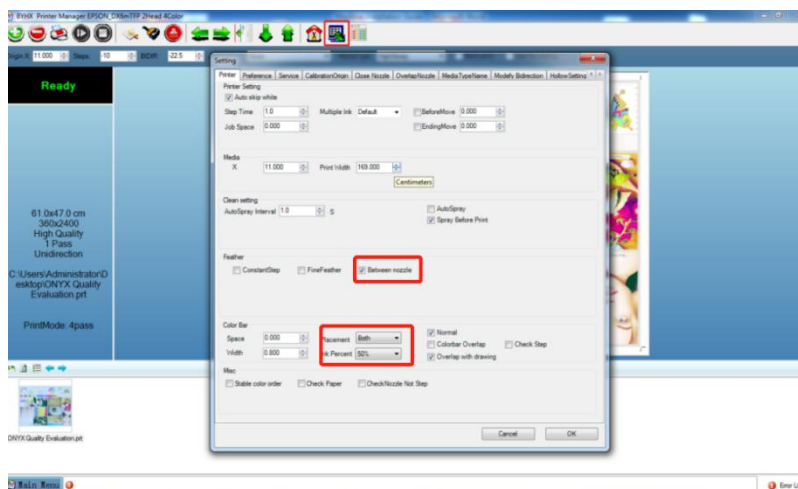


#### ④ JobModeSetting

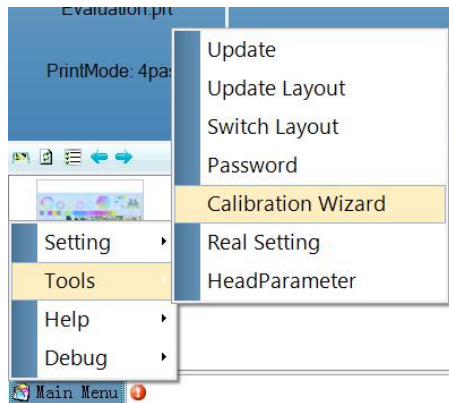


Recommend to use VSD3, strong feather, printer quality(High Precision)

#### ⑤ Edit

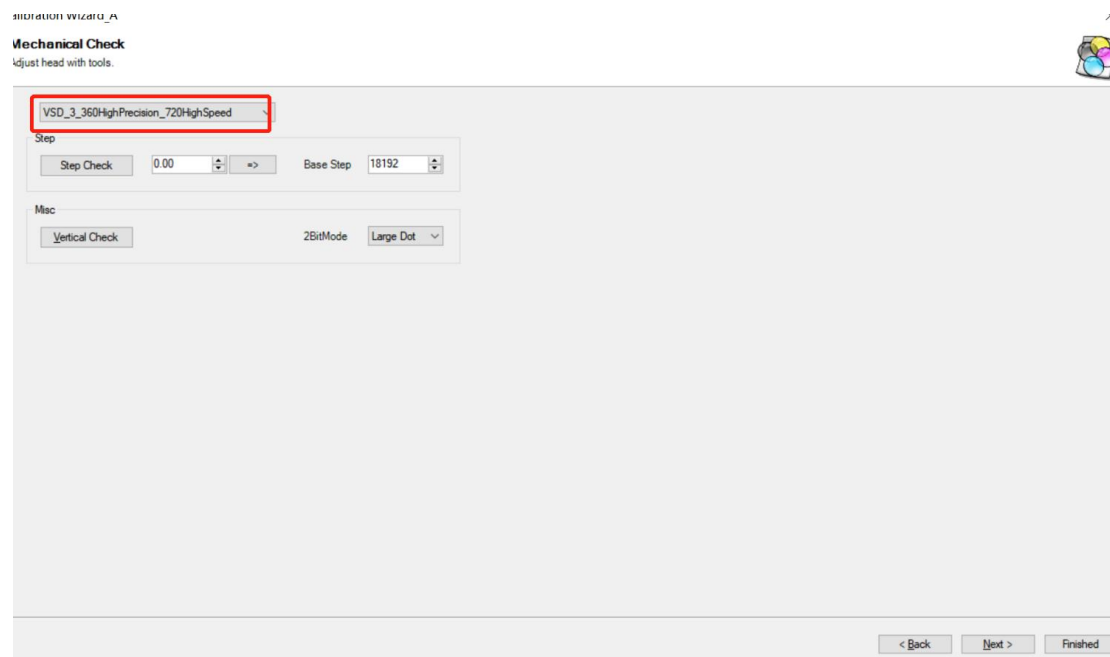


## 4.2 How to do Calibration



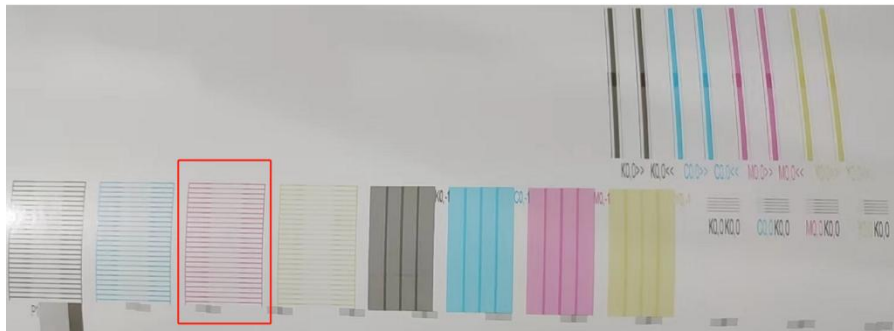
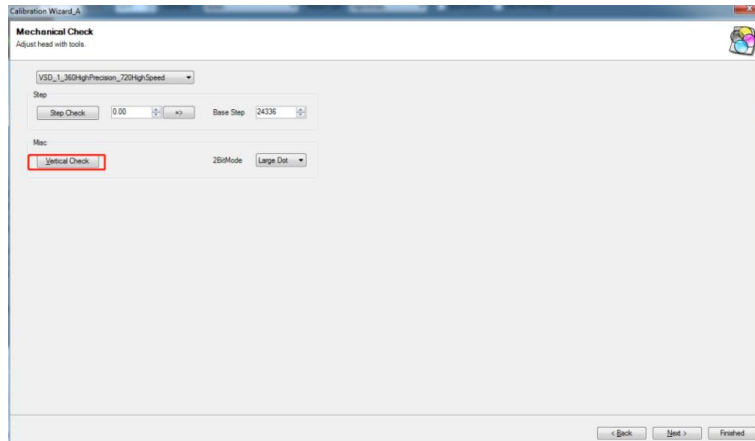
Calibration mode: Vsd 3 360 precision\_720 high speed

1. Step Check Enter value according to the real Calibration image. After you click step check, the printer will print a calibration image.

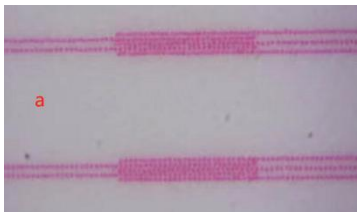


2. Vertical check Also vertical calibration, it' s to adjust head angle so that printhead is aligned with the printing platform vertically. Usually, you need to

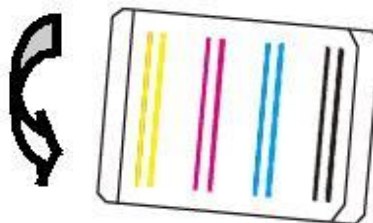
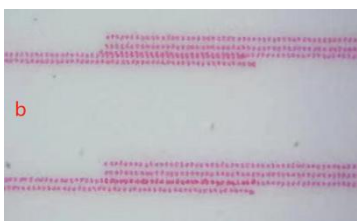
adjust screws on the head plate.



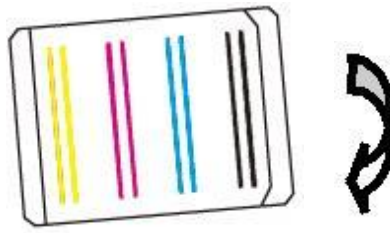
Recommend to use 80-100 magnifier to look at the right channel.



When it looks like the above, then it means your vertical check is perfect.



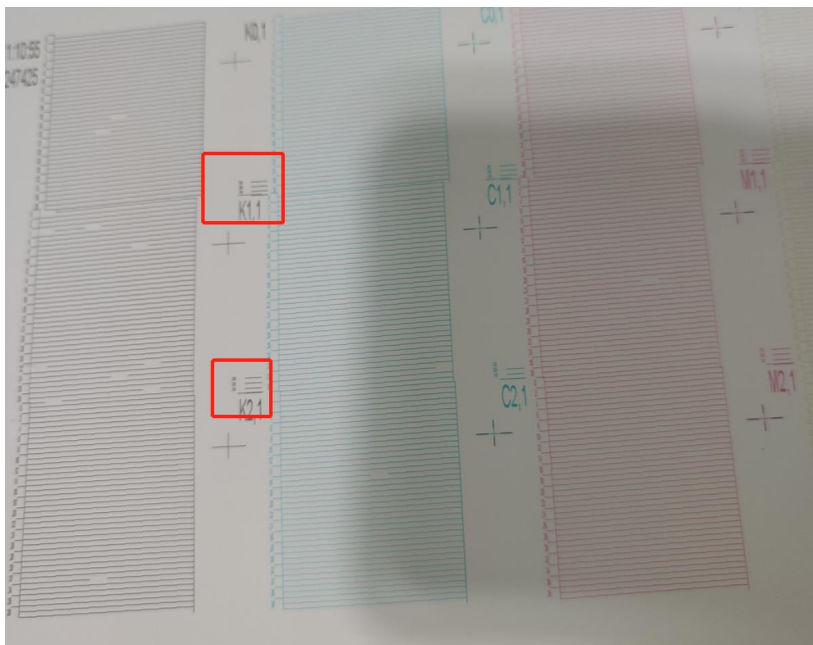
When condition **b** appears, it means that head lens to the right, then please adjust the screw as the arrow.



When condition **c** appears, it means that head lens to the left, then please adjust the screw as the arrow.



When you use printer manager to print nozzle check, adjust H2 and H3 greater than zero.



### 3. Group gap left

Print calibration image and enter the proper value to offset, make sure “0” is aligned perfectly.

Calibration Wizard A

Group: G1 G2 G3

Left: 0 0 0

Right: 0 0 0

Horizontal: Group/Quick

Head: 1 (Y) 3 (C) 5 (M) 7 (M) 9 (Y) 11 (C) 13 (M) 15 (M) 17 (Y) 19 (C) 21 (M) 23 (M)

Left: 0 0 0 0 0 0 0 0 0 0 0 0

Right: 0 0 0 0 0 0 0 0 0 0 0 0

Vertical/OverLap

Head: Y M C K

0 0 0 0

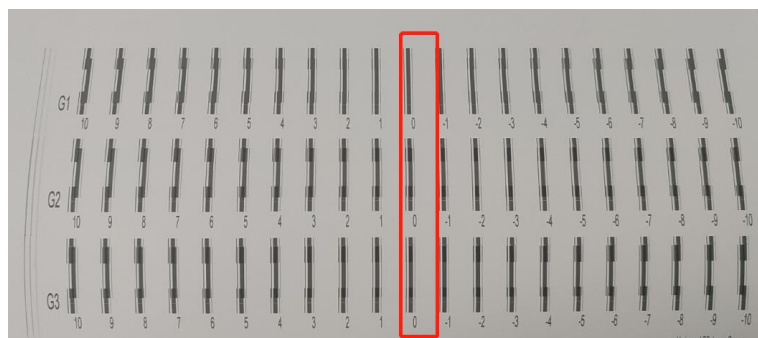
20 20 20 20

16 16 16 16

Step: 4 Pass

Revision: 0.00 Step: 0 Base Step: 18192

Done Save < Back Next > Finished



### 4. Group gap Right

Print calibration image and enter the proper value to offset, make sure “0” is aligned perfectly.

Calibration Wizard A

Group: G1 G2 G3

Left: 0 0 0

Right: 0 0 0

Horizontal: Group/Quick

Head: 1 (Y) 3 (C) 5 (M) 7 (M) 9 (Y) 11 (C) 13 (M) 15 (M) 17 (Y) 19 (C) 21 (M) 23 (M)

Left: 0 0 0 0 0 0 0 0 0 0 0 0

Right: 0 0 0 0 0 0 0 0 0 0 0 0

Vertical/OverLap

Head: Y M C K

0 0 0 0

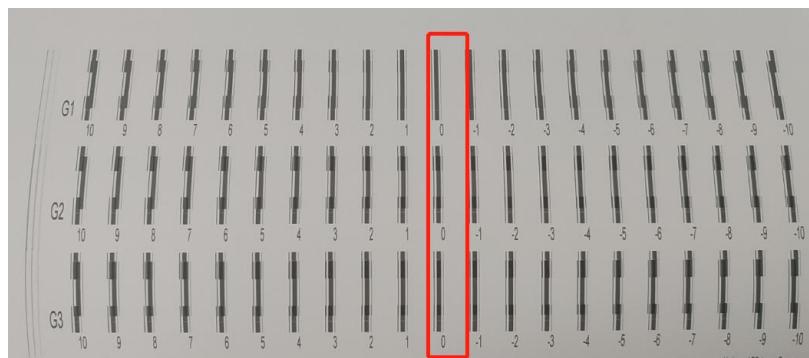
20 20 20 20

16 16 16 16

Step: 4 Pass

Revision: 0.00 Step: 0 Base Step: 18192

Done Save < Back Next > Finished



### 3. Horizontal calibration

#### (1) Bidirectional Calibration, Choose Group all Calibration

Print calibration image and enter the proper value to offset, make sure “0” is aligned perfectly.

Calibration Wizard - Bidirection Calibration

Group: G1, G2, G3

Left: 0, 0, 0, 0

Right: 0, 0, 0, 0

Horizontal: GroupAllCalibration

Bidirection: 0.0

Head: 1 (Y), 2 (C), 3 (M), 4 (K), 5 (Y), 6 (C), 7 (M), 8 (Y), 9 (C), 10 (M), 11 (C), 12 (M), 13 (M), 14 (C), 15 (M), 16 (C), 17 (Y), 18 (C), 19 (M), 20 (M)

Left: 0, 0, 0, 0, 0, 0, 0, 0, 0, 0, 0, 0, 0, 0, 0, 0, 0, 0, 0, 0

Right: 0, 0, 0, 0, 0, 0, 0, 0, 0, 0, 0, 0, 0, 0, 0, 0, 0, 0, 0, 0

Vertical/Color/Lab (Vertical):

Head: Y, M, C, K

0, 0, 0, 0

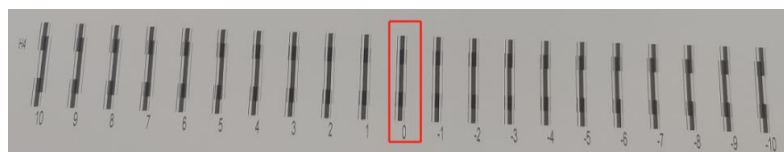
20, 20, 20, 20

16, 16, 16, 16

Step: 4 Pass

Reverse: 0.00, Step: 0, Base Step: 18192

Buttons: Back, Next, Finished



#### (2) Left alignment Right Alignment

Print calibration image and enter the proper value to offset, make sure “0” is aligned perfectly.

Calibration Wizard - Left Calibration

Group: G1, G2, G3

Left: 0, 0, 0, 0

Right: 0, 0, 0, 0

Horizontal: GroupAllCalibration

Bidirection: 0.0

Head: 1 (Y), 2 (C), 3 (M), 4 (K), 5 (Y), 6 (C), 7 (M), 8 (Y), 9 (C), 10 (M), 11 (C), 12 (M), 13 (M), 14 (C), 15 (M), 16 (C), 17 (Y), 18 (C), 19 (M), 20 (M)

Left: 0, 0, 0, 0, 0, 0, 0, 0, 0, 0, 0, 0, 0, 0, 0, 0, 0, 0, 0, 0

Right: 0, 0, 0, 0, 0, 0, 0, 0, 0, 0, 0, 0, 0, 0, 0, 0, 0, 0, 0, 0

Vertical/Color/Lab (Vertical):

Head: Y, M, C, K

0, 0, 0, 0

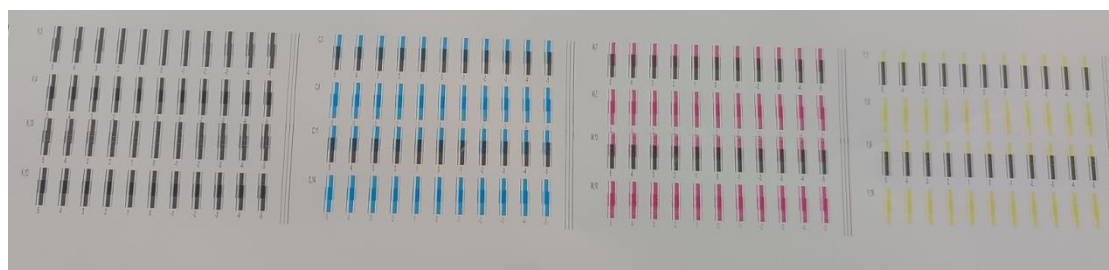
20, 20, 20, 20

16, 16, 16, 16

Step: 4 Pass

Reverse: 0.00, Step: 0, Base Step: 18192

Buttons: Back, Next, Finished





### 3. How to Install Photoprint

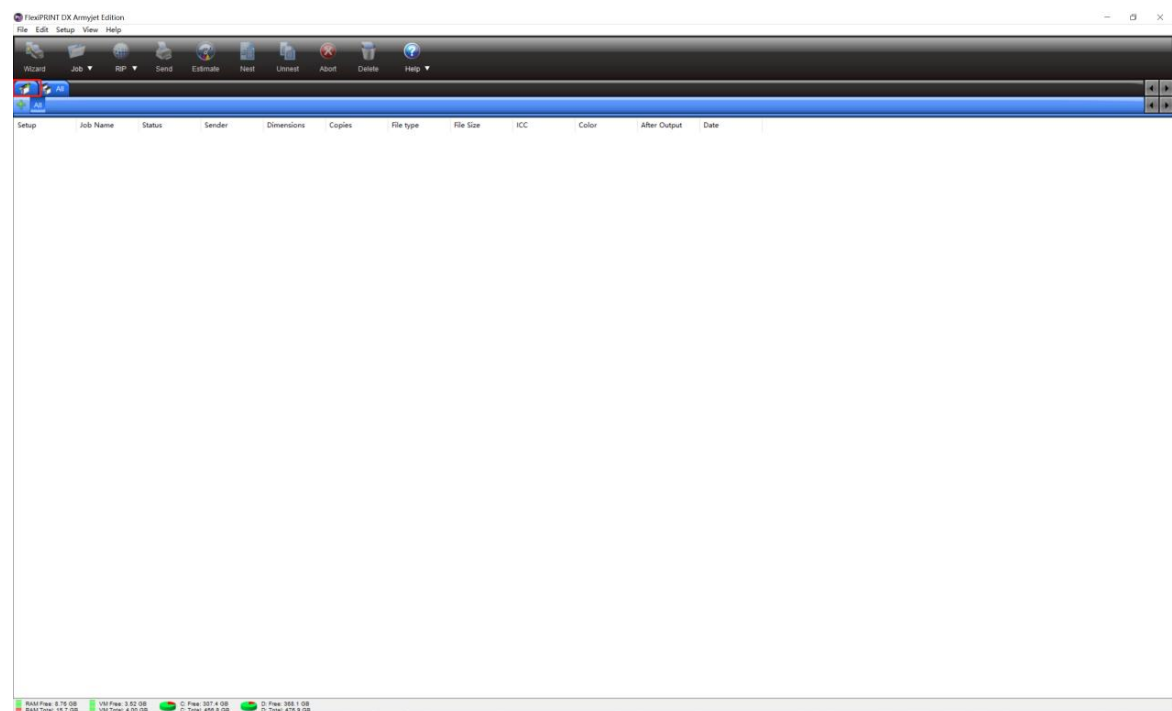
“PhotoPrint Installation manual” About how to install in details, please take a look at PhotoPrint Installation manual.

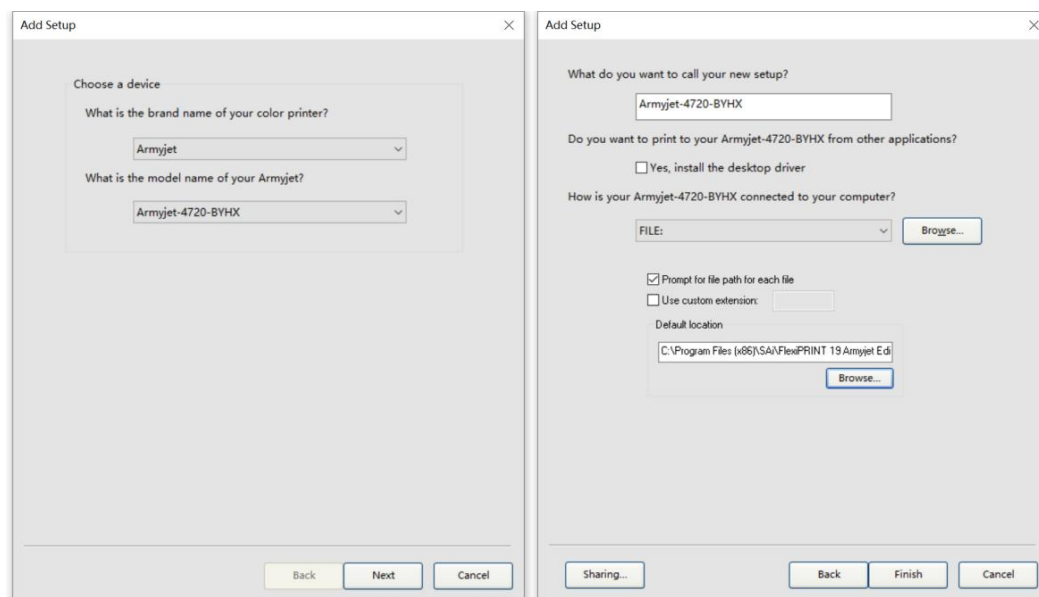
组织		新建	打开	选择		
电脑 > 本地磁盘 (D:) > 飞派软件 > 出厂资料整理 > 3H BYHX SUB 1.8M I3200						
名称	修改日期	类型	大小			
Cleaning Parameters	2023/4/6 14:03	文件夹				
ICC Profile_photoprint	2022/11/29 10:31	文件夹				
Layout-3H	2023/4/6 14:03	文件夹				
Printer Manager	2023/4/6 14:03	文件夹				
Updater_headboard 3H	2023/4/6 14:04	文件夹				
Updater_mainboard 3H_V10.0	2022/11/29 10:31	文件夹				
Waveform	2023/4/6 14:05	文件夹				
dotNetFx40_Full_x86_x64.exe	2023/5/5 11:14	应用程序	49,268 KB			
PhotoPrint Installation manual.pdf	2022/4/7 15:11	WPS PDF 文档	8,017 KB			
Win10 Setting before PM Installation.pdf.pdf	2022/4/7 14:46	WPS PDF 文档	1,392 KB			

#### 3.1 Click this Icon to open photoprint software.



#### ② Add printer. Do as below.





### ③ Open the **ICC Profile\_photoprint**

名称	修改日期	类型	大小
Cleaning Parameters	2023/4/6 14:03	文件夹	
<b>ICC Profile_photoprint</b>	2022/11/29 10:31	文件夹	
Layout-3H	2023/4/6 14:03	文件夹	
Printer Manager	2023/4/6 14:03	文件夹	
Updater_headboard 3H	2023/4/6 14:04	文件夹	
Updater_mainboard 3H_V10.0	2022/11/29 10:31	文件夹	
Waveform	2023/4/6 14:05	文件夹	
dotNetFx40_Full_x86_x64.exe	2023/5/5 11:14	应用程序	49,268 KB
PhotoPrint Installation manual.pdf	2022/4/7 15:11	WPS PDF 文档	8,017 KB
Win10 Setting before PM Installation.pdf.pdf	2022/4/7 14:46	WPS PDF 文档	1,392 KB

### ④ Copy all the

files as below.

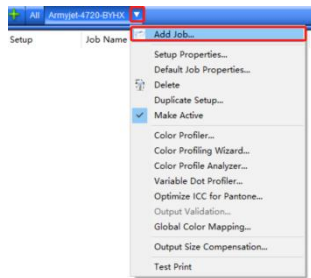
本地磁盘 (D:) > 飞派软件 > 出厂资料整理 > 3H BYHX SUB 1.8M I3200 > ICC Profile_photoprint > BYHX-4720			
名称	修改日期	类型	大小
AJ_BYHX_I3200_SUB_2PASS 360x1200 .icc	2022/7/19 10:48	ICC 配置文件	1,262 KB
AJ_BYHX_I3200_SUB_3PASS 360x1800 .icc	2022/7/19 10:24	ICC 配置文件	1,262 KB
AJ_BYHX_I3200_SUB_4PASS 360x2400 .icc	2022/7/19 10:35	ICC 配置文件	1,318 KB
AJ_BYHX_I3200_SUB1_2PASS 360x1200 .icc	2022/11/3 11:38	ICC 配置文件	1,231 KB
AJ_BYHX_I3200_SUB1_3PASS 360x1800 .icc	2022/11/3 11:24	ICC 配置文件	1,231 KB
AJ_BYHX_I3200_SUB1_4PASS 360x2400 .icc	2022/11/3 13:31	ICC 配置文件	1,231 KB

### ⑤ Open the file where you install photoprint and find ICC profile→BYHX-4720, and the paste them here.

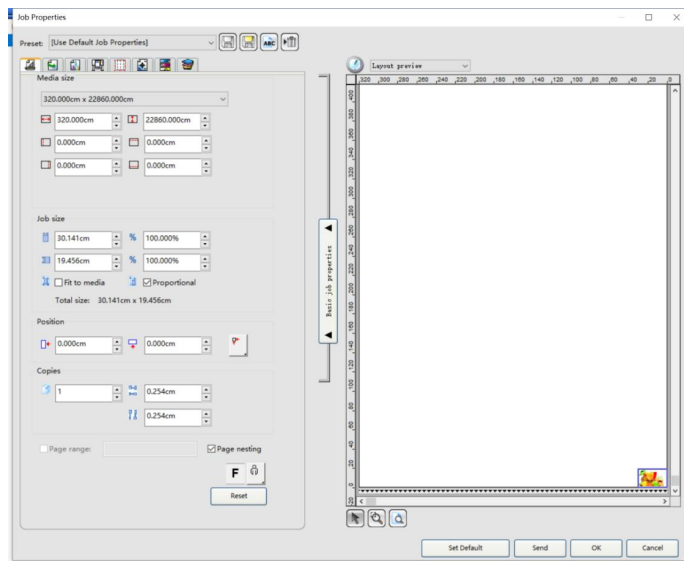
脑 > OS (C:) > Program Files (x86) > SAI > FlexiPRINT 19 Armyjet Edition > ICCProfile > BYHX-4720

AJ_BYHX_I3200_SUB_2PASS 360x1200 .icc	2022/7/19 10:48	ICC 配置文件	1,262 KB
AJ_BYHX_I3200_SUB_3PASS 360x1800 .icc	2022/7/19 10:24	ICC 配置文件	1,262 KB
AJ_BYHX_I3200_SUB_4PASS 360x2400 .icc	2022/7/19 10:35	ICC 配置文件	1,318 KB
AJ_BYHX_I3200_SUB1_2PASS 360x1200 .icc	2022/11/3 11:38	ICC 配置文件	1,231 KB
AJ_BYHX_I3200_SUB1_3PASS 360x1800 .icc	2022/11/3 11:24	ICC 配置文件	1,231 KB
AJ_BYHX_I3200_SUB1_4PASS 360x2400 .icc	2022/11/3 13:31	ICC 配置文件	1,231 KB

## ⑥ Add Job



## Edit the image



## Choose output profile and then click Send.

